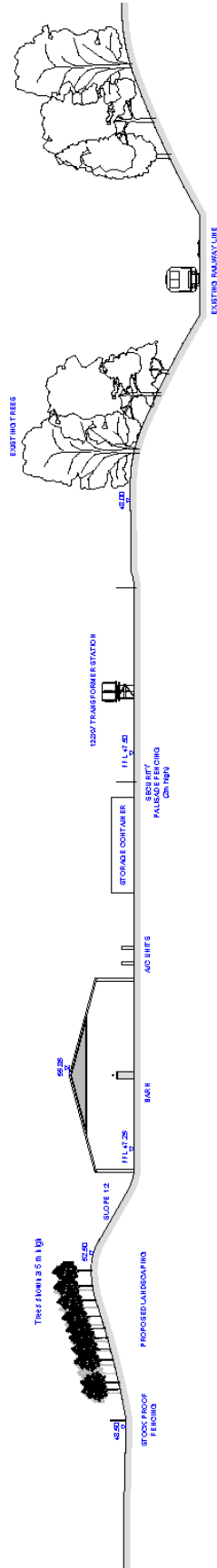
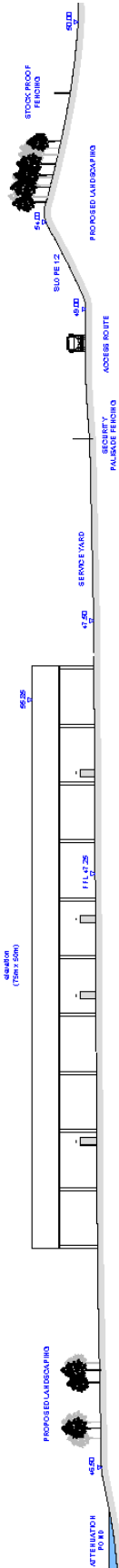


NORTH-SOUTH SECTION
 SCALE 1:250



EAST-WEST SECTION
 SCALE 1:250



High Middlefield Farm , Durham Road, Thorpe Thewles
 Development of a battery operated facility of up to 49.95MW capacity to meet peak supply demands on the local distributed power network and/or balancing services to National Grid with associated ancillary equipment and infrastructure